



Quick Start: Part 1



OKIPAGE 24

- Basic model
- 16 MB memory

OKIPAGE 24DX

- Built-in Duplexer
- 16 MB memory

OKIPAGE 24n

- Built-in 10/100 Base-T Network Print Server
- 32 MB memory



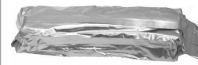
OKIPAGE 24Tn

- Built-in 10/100 Base-T Network Print Server
- 32 MB memory
- 2nd Paper Tray (must be installed)

OKIPAGE 24DXn

- Built-in Duplexer
- Built-in 10/100 Base-T Network Print Server
- 32 MB memory
- 2nd Paper Tray (must be installed)

Components



Toner



CD(s)



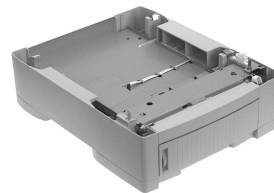
Power Cord



Pigtail Cable
(Network models only)



Light-Shield Bag
(Protects image drum from light when it is removed from printer.)



2nd Paper Tray Mechanism
(Models 24Tn & 24DXn only)

Models furnished with 2nd Paper Tray:

Before proceeding, install the 2nd Paper Tray.

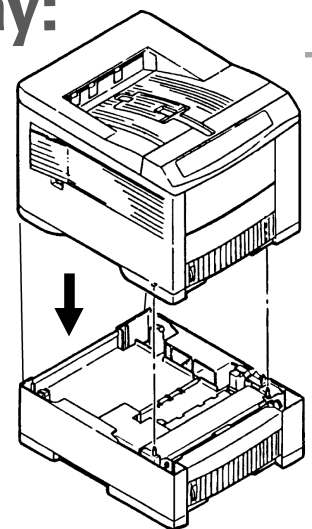
Warning!

To avoid injury to fingers, two people should perform the installation of the 2nd Paper Tray.

1. Unpack the printer and 2nd Paper Tray.
2. Remove any shipping materials from the 2nd Paper Tray.
3. Lower the printer onto the 2nd Paper Tray, inserting pins on tray into holes in base of printer.



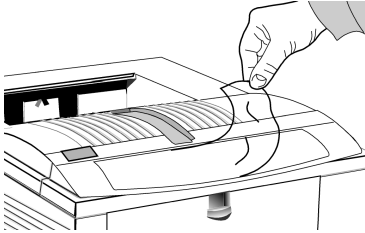
Make sure the printer is firmly seated on the 2nd Paper Tray.



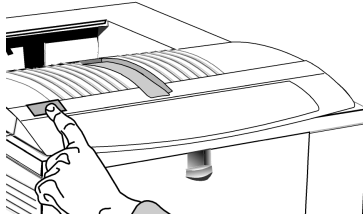
All Models:

1

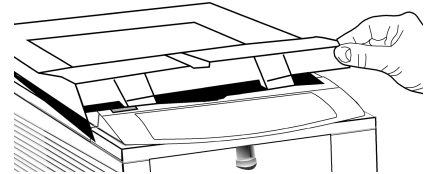
Preliminaries



Remove the protective film and any shipping tape.



Press OPEN.



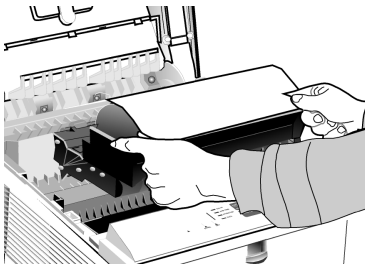
Lift the cover.

2

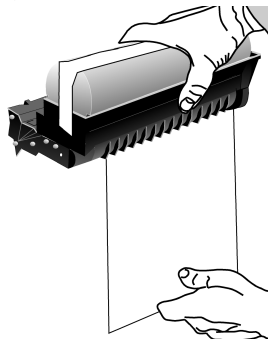
Prepare the Image Drum ("Type 7," OKI P/N 40468701)

Caution!

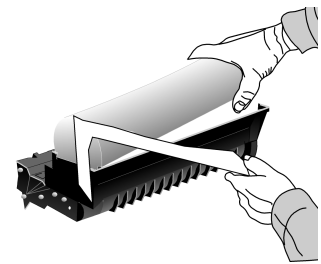
Do not touch the image drum's green surface!



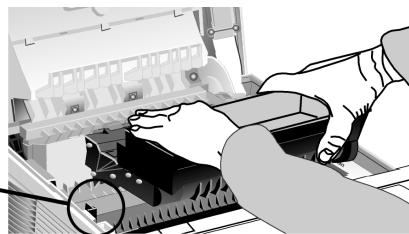
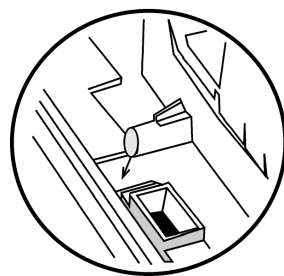
Lift out the image drum.



Pull out the paper.

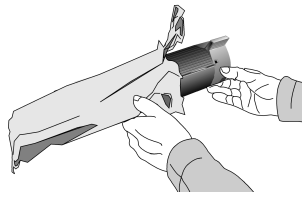


Remove the tape and sponge.
! Careful: the sponge will have some loose toner on the bottom from factory testing.

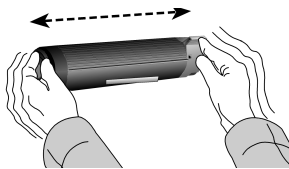


Replace the drum.

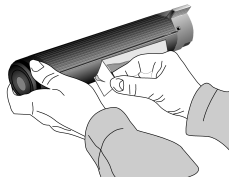
3 Install the Toner ("Type 7," OKI P/N 40468801)



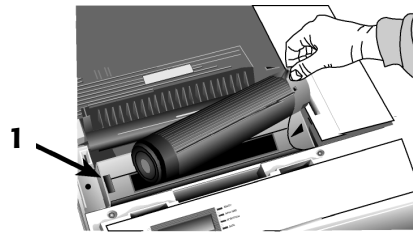
Unwrap the toner cartridge.



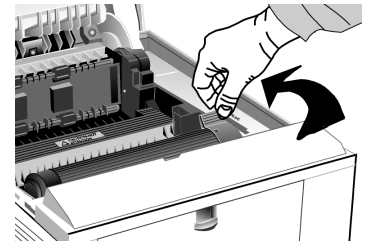
Shake it back and forth.



Remove the tape.

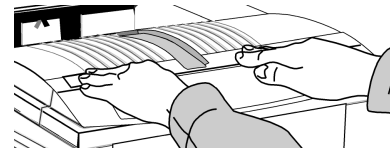


Place the black end under the tab (1), then lower the gray end into the toner well.



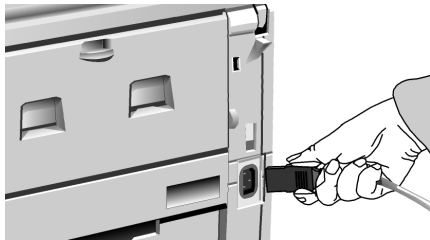
Push the lock lever toward the back of the printer as far as it will go.

Close the cover.



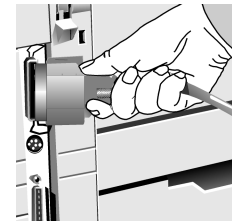
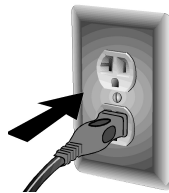
4 Make Connections

! For more information, see "Interfacing with the Computer" under Printer Controls in the on-line User's Guide.



Power Connection

Plug in the power cord.



Parallel Port (LPT) Connection (Non-Network Models)

Requires a bidirectional parallel printer cable marked IEEE 1284-compliant; the cable is not supplied.

Network Connection (Network models Only):

1 Pigtail (supplied with network models):

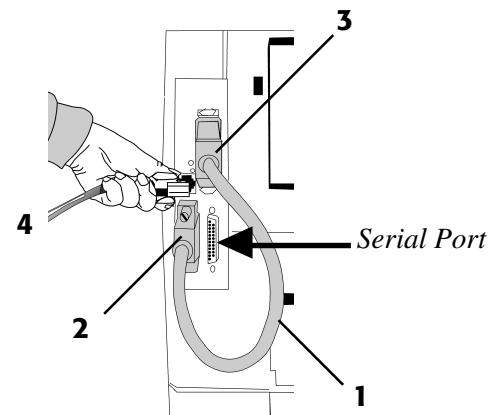
Attach to the OkiLAN port (2) and to the printer's parallel port (3).

Note! Do not connect to the printer's serial port.

4 Ethernet Cable, not supplied

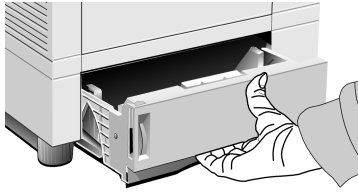
PC: Requires Ethernet cable with two twisted wire pairs and an RJ45 plug.

Macintosh: Requires Ethernet crossover cable with RJ45 connectors at either end.

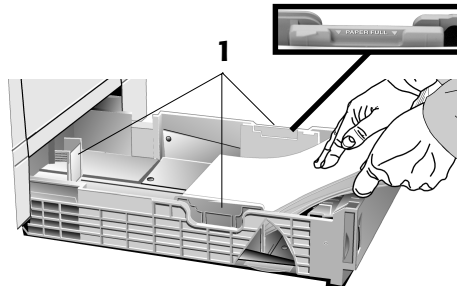


5 Load Paper

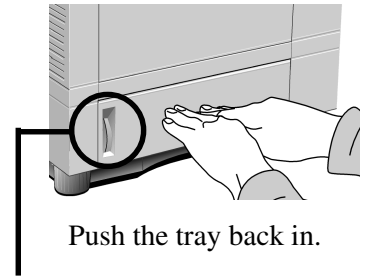
! *The printer comes set for standard, 8½" x 11", 20-lb. paper fed from Tray 1. To change the default to another print media, size or paper source, see "How do I?" in the on-line User's Guide.*



Pull the tray out.



Adjust the guides (1) and load paper.



Push the tray back in.

Paper Gauge:

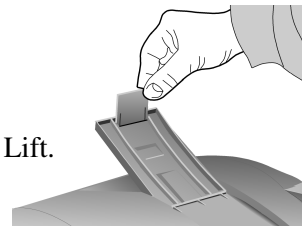
Indicates the amount of paper left in the drawer.

Models 24Tn & 24DXn Only: Load the 2nd Paper Tray in the same manner.

6 Open the Top Paper Exit Path.



Open.



Lift.

! *To print envelopes, transparencies, labels, etc., use the front feeder and the rear exit path: see "How Do I?" in the on-line User's Guide for more information.*

7 Print the Demo Page.

- 1 Turn the printer on.
- 2 Press ON LINE.
- 3 Hold FORM FEED until PRINT DEMO PAGE appears on the display.
- 4 Press ENTER, then ON LINE.

8 Check the Settings.

Models Furnished with 2nd Paper Tray

The printer is set to print from Tray 1. You can set the printer to automatically switch to Tray 2 when Tray 1 is empty, or to make Tray 2 the default. See "How Do I?" in the on-line User's Guide.

Front Panel Display Language

To change the display language, see "Front Panel" under Printer Controls in the on-line User's Guide.

Power Save Delay & Quiet Mode Settings

The printer comes with Power Save Delay on.

! *For the fastest possible time to print, set the Power Save Delay to Disabled and the Quiet Mode to Off: see "Time to Print" under Printer Controls in the on-line User's Guide.*

Printer Emulation

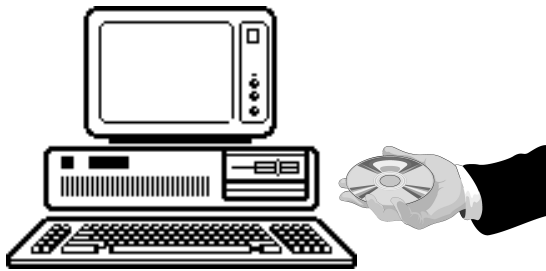
The printer automatically switches emulations depending on what driver it detects when it receives a document. To select a specific emulation, see "Selecting an Emulation" under Printer Controls in the on-line User's Guide.

You're now ready to install the software: see Part 2.

OKIPAGE® 24 Series Quick Start: Part 2

Windows Operating Systems

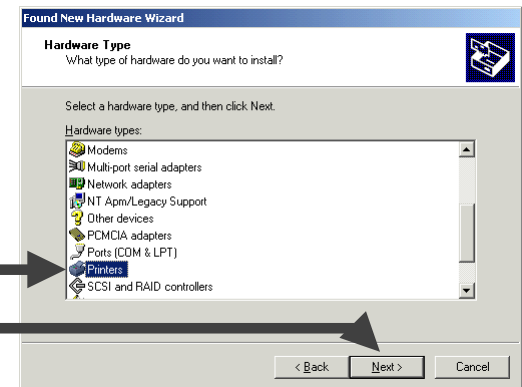
1 Install the Driver



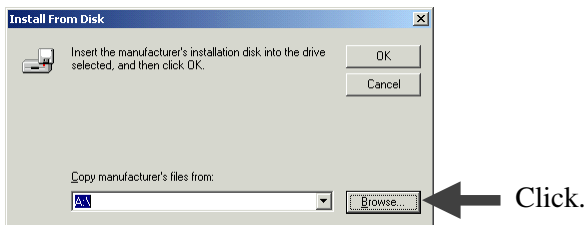
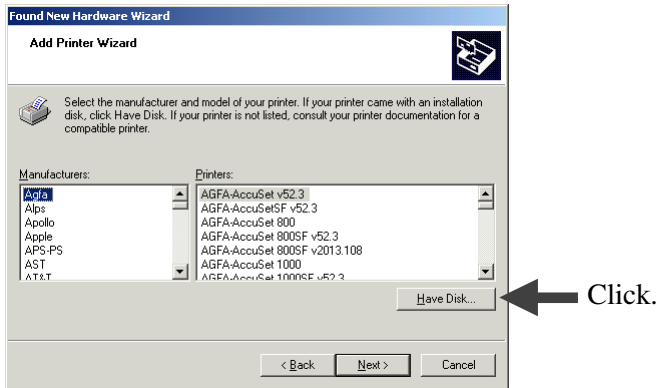
To Install the Windows® 2000 Driver

! Have your original Microsoft® Windows 2000 CD handy. You may be prompted for it during the installation.

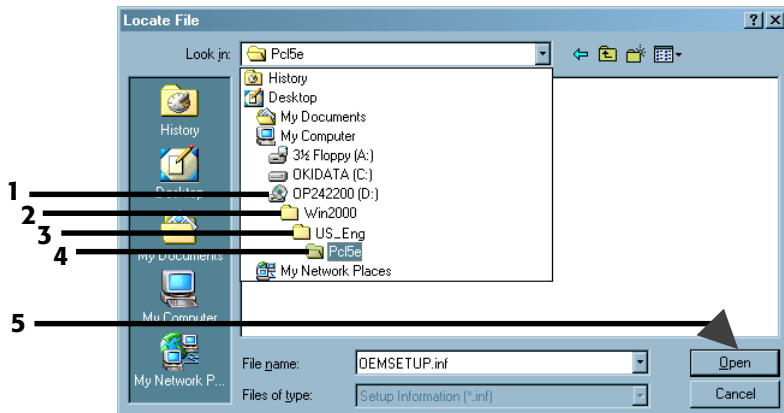
- Close any open applications.
- Make sure that the printer is connected to the PC and turned on.
- Restart the computer and wait for the following window to appear:



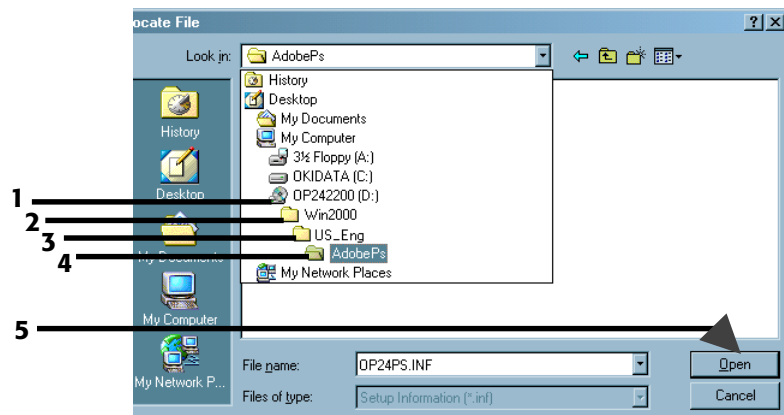
- Insert the “OKIPAGE 24 Drivers, Utilities and Publications for Windows 2000 and Mac OS 7.0 and higher” CD in your CD-ROM drive.



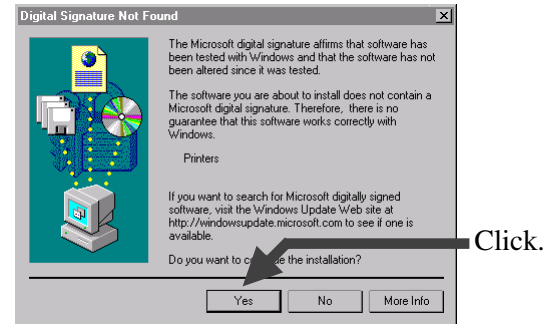
- To load the Windows 2000 PCL5e driver, browse to d:\Win2000\US_Eng\Pcl5e (assuming D is your CD-ROM drive):



- Or, to load the Windows 2000 Adobe PostScript driver, browse to d:\Win2000\US_Eng\AdobePs (assuming D is your CD-ROM drive):



- Click OK.
- Click Next.
- Follow the on-screen instructions until the Digital Signature Not Found window appears:



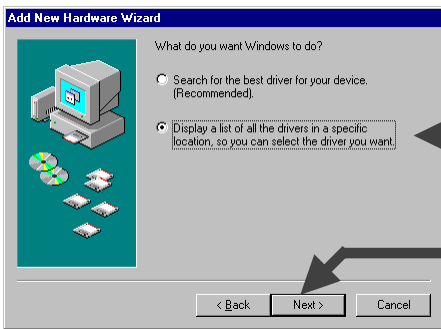
- ! **If the Digital Signature Not Found window appears, but does not offer you the option of continuing, check with your System Administrator regarding the Windows 2000 security settings.**

- Finish the installation following the instructions on your screen.

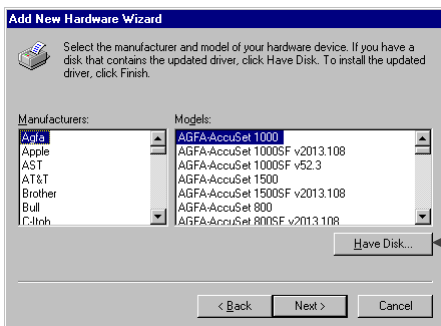
To Install the Windows 98 Driver

! *Have your original Microsoft Windows 98 CD handy. You may be prompted for it during the installation.*

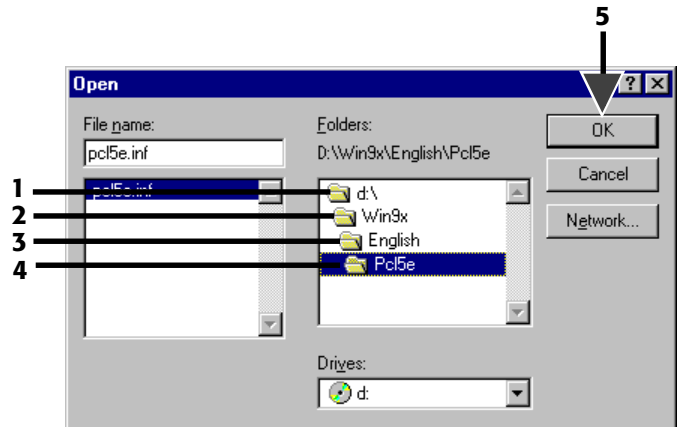
- Close any open applications.
- Make sure that the printer is connected to the PC and turned on.
- Restart the computer and wait for the following window to appear:



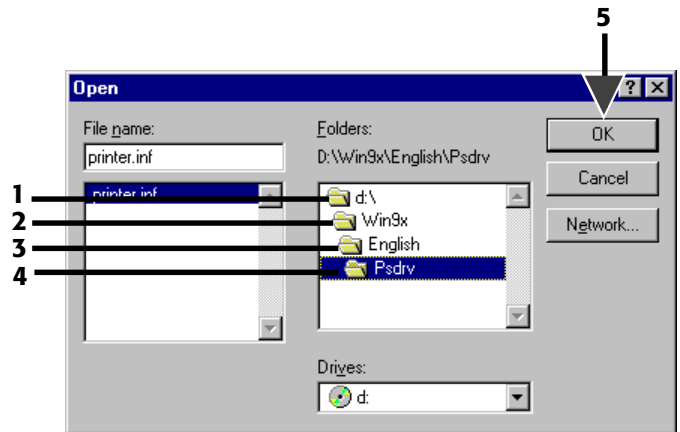
- Insert the “OKIPAGE 24 Drivers, Utilities and Publications for Windows 95/98 and NT4.0” CD in your CD-ROM drive.



- To load the Windows 98 PCL5e driver, browse to d:\Win9x\English\Pcl5e (assuming D is your CD-ROM drive):



- Or, to load the Windows 98 Adobe PostScript driver, browse to d:\Win9x\English\Psdrv (assuming D is your CD-ROM drive):



- Click OK.
- Click Next.
- Complete the installation following the instructions on your screen.

To Install the Windows 95B (OSR2) Driver

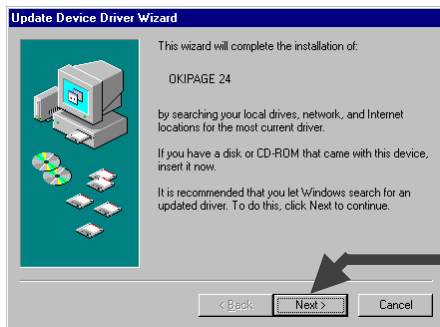
- ! Have your original Microsoft Windows 95 CD handy.
- You may be prompted for it during the installation.

To determine if you have Windows 95B (OSR2) or 95A (Original 95):

- Click Start → Settings → Control Panel.
- Double-click System.
- On the General tab, look under System. Beneath “Microsoft Windows 95” a version number appears. If that number is followed by the letter “B” you have 95B, if not, you have 95A.

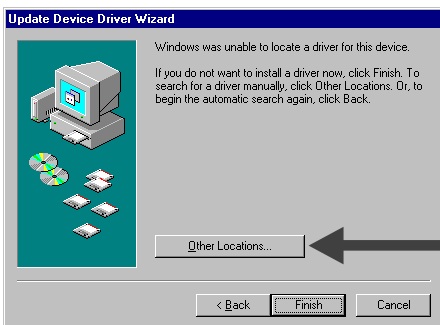
To install the Driver:

- Close any open applications.
- Make sure that the printer is connected to the PC and turned on.
- Restart the computer and wait for the following window to appear:



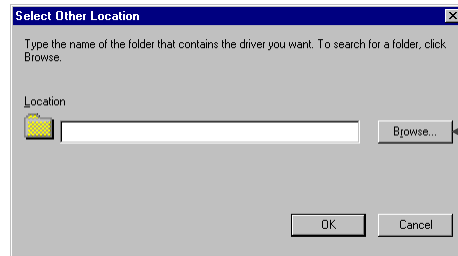
Click.

- Wait for the following window to appear:



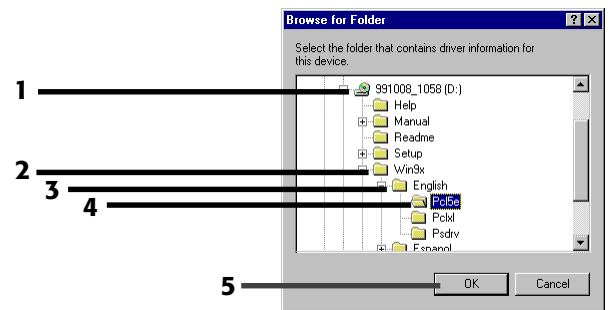
Click.

- Insert the “OKIPAGE 24 Drivers, Utilities and Publications for Windows 95/98 and NT4.0” CD in your CD-ROM drive.

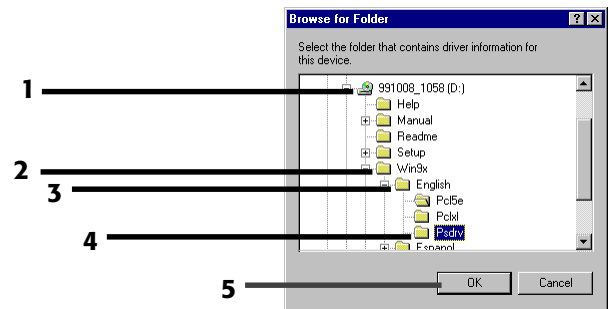


Click.

- To load the Windows 95B PCL5e driver, browse to d:\Win9x\English\Pcl5e (assuming D is your CD-ROM drive):



- Or, to load the Windows 95B Adobe PostScript driver, browse to d:\Win9x\English\Psdrv (assuming D is your CD-ROM drive):



- Click OK.
- Click Finish.
- Complete the installation following the instructions on your screen.

To Install the Windows 95A (Original 95) Driver

! Have your original Microsoft Windows 95 CD handy. You may be prompted for it during the installation.

! To determine if you have Windows 95 version A, see “To Install the Windows 95B (OSR2) Driver.”

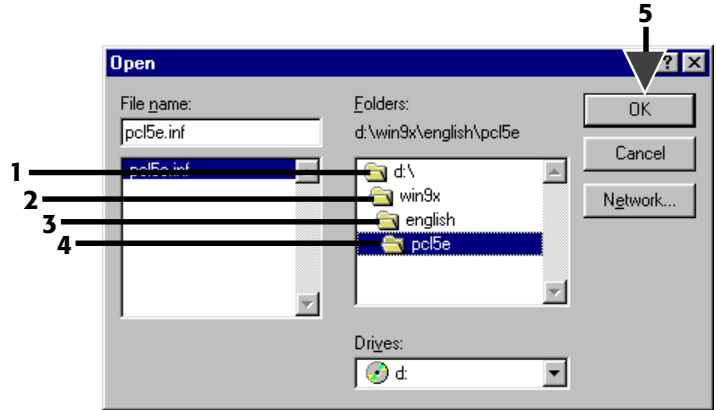
- Close any open applications.
- Make sure that the printer is connected to the PC and turned on.
- Restart the computer and wait for the following window to appear:



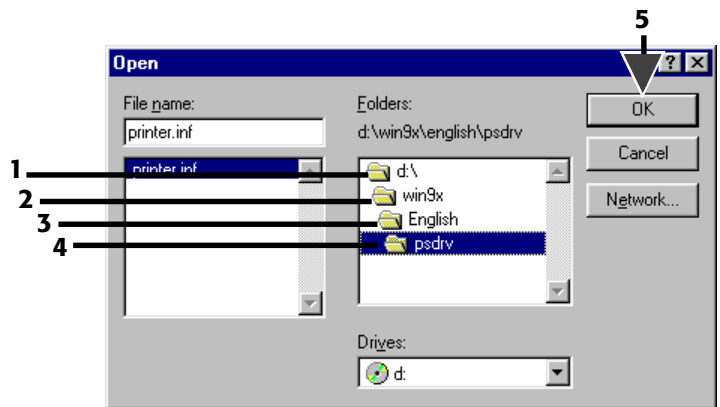
- Insert the “OKIPAGE 24 Drivers, Utilities and Publications for Windows 95/98 and NT4.0” CD in your CD-ROM drive.



- To load the Windows 95A PCL5e driver, browse to d:\win9x\english\pcl5e (assuming D is your CD-ROM drive):



- Or, to load the Windows 95A Adobe PostScript driver, browse to d:\win9x\english\psdrv (assuming D is your CD-ROM drive):

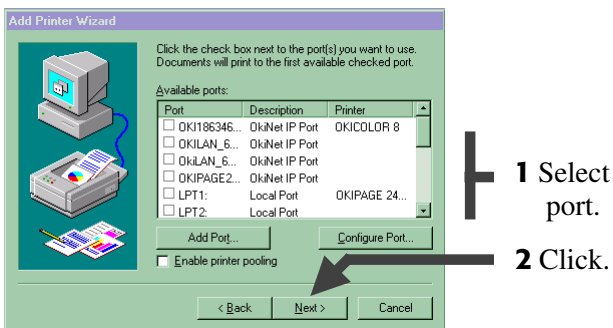
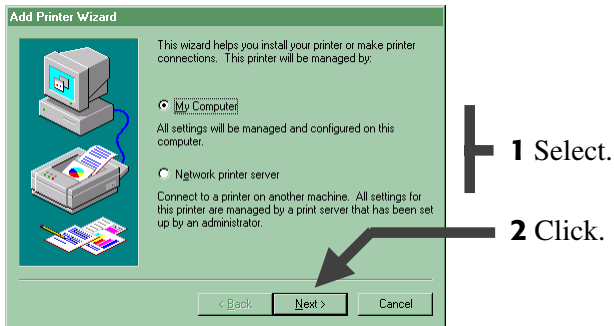
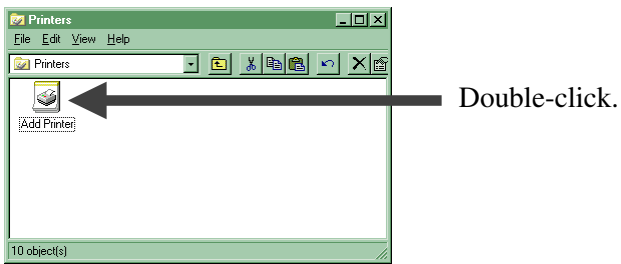
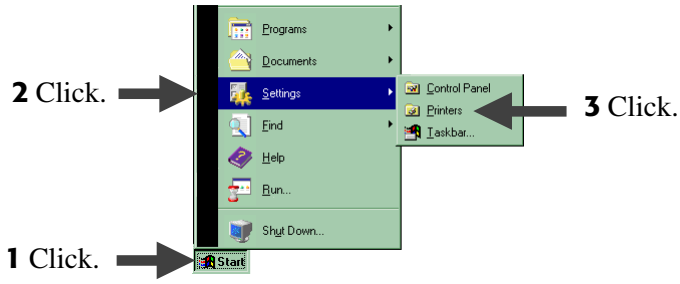


- Click OK.
- Click Next.
- Complete the installation following the instructions on your screen.

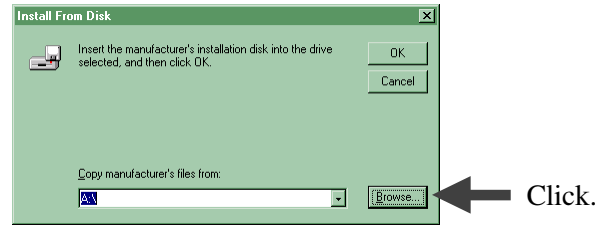
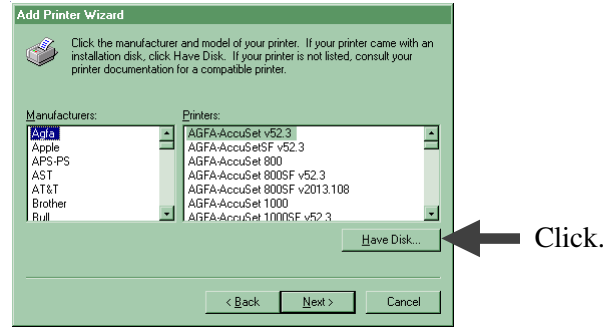
To Install the Windows NT 4.0 Driver

! Have your original Microsoft Windows NT 4.0 CD handy. You may be prompted for it during the installation.

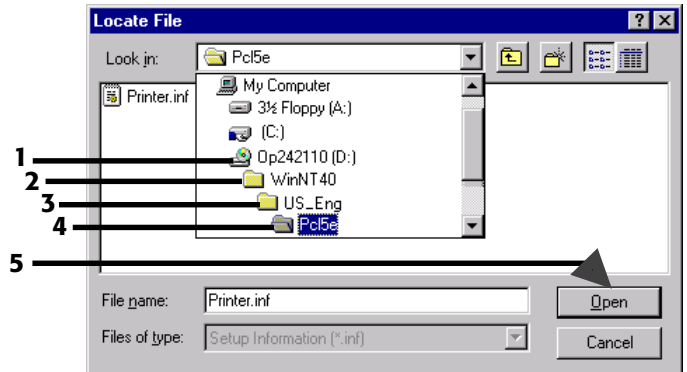
- Close any open applications.
- Make sure that the printer is connected to the PC and turned on.



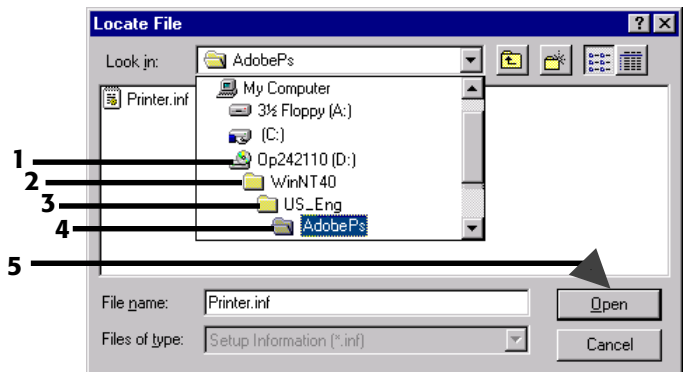
- Insert the “OKIPAGE 24 Drivers, Utilities and Publications for Windows 95/98 and NT4.0” CD in your CD-ROM drive.



- To load the Windows NT 4.0 PCL5e driver, browse to d:\WinNT40\US_Eng\Pcl5e (assuming D is your CD-ROM drive):



- Or, to load the Windows NT 4.0 Adobe PostScript driver, browse to d:\WinNT40\US_Eng\AdobePs (assuming D is your CD-ROM drive):



- Complete the installation following the instructions on your screen

2 Windows: Install the Remaining Software

All Models: Install the User's Guide, Readme File & Registration Program

The On-Line User's Guide Includes:

- Ordering & Replacing the Toner Cartridge
- Printing Envelopes, Transparencies, etc.
- Problem Solving, Printer Controls, etc.

Windows Requirements for the User's Guide:

- Windows 2000 or 98
- Windows 95B (OSR2) or higher with Microsoft Internet Explorer 4.0 or higher
- Windows 95A (Original 95) with Microsoft Internet Explorer 3.02
- Windows NT 4.0 with Microsoft Internet Explorer 4.0 or higher

To Install the User's Guide, Readme File & Registration Program

- Close any open applications and place the "OKIPAGE 24 Drivers, Utilities and Publications for Windows 95/98 and NT4.0" CD in your CD-ROM drive.
- Click Start → Run.
- Type d:\install.exe (assuming D is your CD-ROM drive) and click OK.
- Click the language of your choice.
The OKI Menu Installer window opens.
- Click the button beside Additional Software.
- Follow the on-screen instructions. When you are done you will be back in the OKI Menu Installer window.
- If you are installing a network printer, proceed to the instructions "Install Network Software" on the next page. Otherwise, close the OKI Menu Installer window.

To View the Readme File

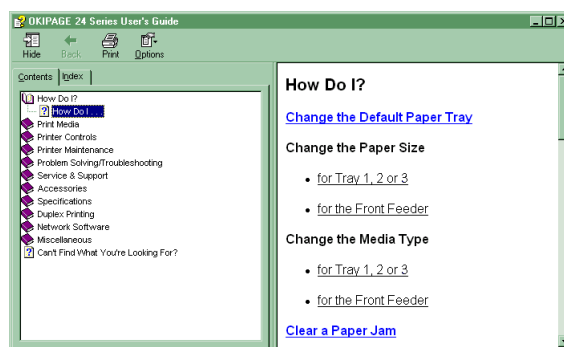
Click Start → Programs → OKIPAGE 24 → Readme.

To Run the Registration Program:

Click Start → Programs → OKIPAGE 24 → Product Registration.

To View the User's Guide:

Click Start → Programs → OKIPAGE 24 → User's Guide:



Network Models Only: Install Network Software

OkiNet Utilities

Used to configure the OKIPAGE 24 print server.

To Install the OkiNet Utilities:

- In the OKI Menu Installer window, click the button beside Network Utilities.
- Click the button beside OkiNet Utilities and follow the on-screen prompts to load the components of your choice.

! *For more information on using the OkiNet Utilities software, see the OkiLAN® 6100e+ User's Guide.*

OkiView®32 Utility (Windows Only)

Provides network management utilities such as

- View Status
- Manage the Print Queue
- Change Printer Settings, etc.
- Set SNMP Traps, etc.

The OkiView32 management utilities can be used for larger network environments with multiple printers.

To Install OkiView32:

- In the OKI Menu Installer window, click the button beside Network Utilities.
- Click the button beside OkiView32 and follow the instructions on your screen.

To Run OkiView32:

Click Start → Programs → OkiView32 Utility → OkiView32.

- Most settings can be made by selecting Printer Properties in the Printer menu or Discovery Preferences in the Settings menu.
- For more details, see the OkiView32 on-line Help.

Macintosh

1 Install the Driver



To Install the Adobe® PostScript® Level 2 Driver

- Insert the “OKIPAGE 24 Drivers, Utilities and Publications for Windows 2000 and Mac OS 7.0 and higher” CD in your CD-ROM drive.
- Open the CD icon that appears on the Desktop.

- Open the Mac folder, then the English folder.
- Click the OKIPAGE 24 PS Installer icon, then click Continue.
- If you agree to the terms, select Accept, then click Install.
- When prompted, click Restart to complete the installation.

To Select the Printer

- Activate the Chooser from the Apple menu.
- Locate and select the PSPrinter icon.
- Highlight the OKI printer from the printer list, and click Create.
- Click your choice of Auto Setup or Select PPD.
- Follow the instructions on your screen.

2 Install the On-Line User's Guide

Requirements

- Microsoft Internet Explorer version 4.0 or higher
- Netscape® Communicator version 4.7 or higher

To Install the User's Guide

- ! **In order to open the User's Guide, you must have your Macintosh set to run .htm extension files under your browser.**
- Create a folder in which to store the User's Guide.
- Place the “OKIPAGE 24 Drivers, Utilities and Publications for Windows 2000 and Mac OS 7.0 and higher” CD in your CD-ROM drive.
- Copy the files from the CD folder Manual\Htm\English to the folder you created.

To View the User's Guide

To use the on-line User's Guide, go to the folder where you placed it and double-click the **start_e.htm** file.

The Contents window appears:

Contents
How Do I?
Print Media
Printer Controls
Printer Maintenance
Problem Solving/Troubleshooting
Service & Support
Accessories
Specifications
Duplex Printing
Network Software
Miscellaneous
Can't Find What You're Looking For?

Product Registration Options

To register your printer use any of the following options:

- Go to our web site **<http://www.okidata.com>** and click Product Registration.
- Fill out the enclosed registration form and mail it or fax it in.
- *Windows only:* Register via modem using the Product Registration program (click Start → Programs → OKIPAGE 24 → Product Registration, then follow the on-screen prompts to register your printer).

For Support or Service

- See our multilingual web site:
<http://www.okidata.com>
- Consult the store where you purchased your printer.
- *In the U.S. and Canada, call:*
 - 1-800-OKI-DATA (1-800-654-3282)
24 hours a day, 7 days a week
- *In Latin America, call:*
 - Oki Data de Mexico, S.A. de C.V., (525) 263-8780
 - Oki Data do Brasil, Ltda., 5511-5011-1518

OKI, OKIPAGE, OkiLAN, OkiView: R, Oki Electric Industry Company, Ltd. Adobe, PostScript: TM, Adobe Systems Inc., may be registered in certain jurisdictions. Macintosh: TM, Apple Computer, Inc., registered in the U.S. and other countries. Microsoft, Windows: R or TM, Microsoft Corporation, U.S. and/or other countries. Netscape, Netscape Navigator: R, Netscape Communications Corporation, U.S. and other countries.

Oki Data Americas, Inc., 2000 Bishops Gate Blvd., Mt. Laurel, NJ 08054-4620
Tel: (856) 235-2600 FAX: (856) 222-5320

<http://www.okidata.com>

Oki Data Americas, Inc., 2735 Matheson Blvd. East, Unit 1, Mississauga, Ontario, Canada L4W 4M8
Tel: (800) 654-3282 FAX: (905) 238-4427

Oki Data de Mexico, S.A. de C.V., Mariano Escobedo No. 748 - 8 Piso, Col Anzures, e. p. 11590, Mexico, DF
Tel: (525) 263-8780 FAX: (525) 263-8785

Oki Data do Brasil, Ltda., Av. Leonardo da Vinci, 1178/1182, Jabaquara, Sao Paulo, Brasil
Tel: 5511-5011-1518 FAX: 5511-5012-0267
